



**Methow Valley Nordic Ski Educational Foundation**

# **2019-20 Annual Report**

*We support a vibrant Nordic ski community in the Methow Valley*

As is regularly the case for anxious skiers, winter 2019-20 graced the Methow Valley just in time, delivering skiable snow around mid-December. The winter season proceeded more or less as normal until public health response due to the emerging COVID19 pandemic forced the end of activities in mid-March. We were lucky that many of our programs and much of the season had finished by then, and only some disappointment for skiers and biathletes who missed the final trips and events of their ski season.

## New Initiatives for Winter 2019-20

**Ski Team group structure** All groups in the groups within the ski team were renamed with winter-themed animals this year, with the goal being to make the distinctions between group a bit less rigid and to breakdown some of the preconceived notions about groups. In addition, the Polar bear group, which is generally late elementary-age skiers, changed its structure to increase team identity and provide for a better balance in coaching for the skiers throughout the group.



**Ski Library:** Led by board member Ginny Price, the Ski Library is a collection of loaner equipment aimed to help skiing become an outlet for family activity. It is provided for parents who have children in Ski Cubs or on the Methow Valley Nordic Team and the equipment is of a quality and recent enough to make it a pleasurable experience for parents new to the sport. This initial effort was intended to be small and manageable, with the objective of learning on a small scale before exploring possible ideas for improving program reach in future years. A substantial donation of equipment from Nordic Ultratune helped to launch the program in addition to individual donations from skiers in the community.



**Kindergarten Ski Cubs** Ski Cubs added a Thursday session for kindergarteners with 14 skiers signed-up. Equipment for the Thursday session was loaned from Methow Valley Ski School in Mazama. The new addition was a success.

**Play Areas** MVNSEF continued efforts to provide high quality ski opportunities for skiers out the back door of the schools. This year's efforts were focused on developing two ski

playgrounds on the trails on school district property, one closer to the elementary school aimed at early elementary age skiers such as those in Ski Cubs or beginning with the Ski Team, and one adjacent to the existing Ski Stadium with a variety of more advanced features. Many thanks to Casey Smith for his work in the excavator in our initial efforts to develop these areas. (Casey also took over as grooming coordinator for the school trails this year.)

**Skis on the Bus** In cooperation with the school district, and with help from Caroline Tareski, MVNT parent, the school is now able to offer ski pick-up at designated stops on morning bus routes, reducing the requirement for parents to shuttle skis to the school for kids to participate in after school ski programs. Many thanks to the school district and all who helped research and come up with a solution within the constraints of state laws for school busses!

**Biathlon Range Improvements** Continuing work on the biathlon range at LBHS, MV Biathlon reinforced the firing line with ecology blocks to prevent erosion and keep the line clearly defined. Additionally, with funds raised at past Try Biathlon events, MVB was able to purchase 7 new targets to replace ones that had been on loan from Washington Biathlon Association. Targets will be installed in summer 2020.



**Two Thursday sessions for weekly classes** Due to popular demand two sessions for the intermediate weekly classes and the Fitness and Technique Training (FATT) class were offered on Thursday mornings at 9 and 11 AM. This helped reduce the number of instructors required to meet the increased interest while the back-to-back sessions made the time commitment more worthwhile for instructors.

## Program Reports

Overall, MVNSEF events and programs combined for nearly 6000 skier days this past winter.

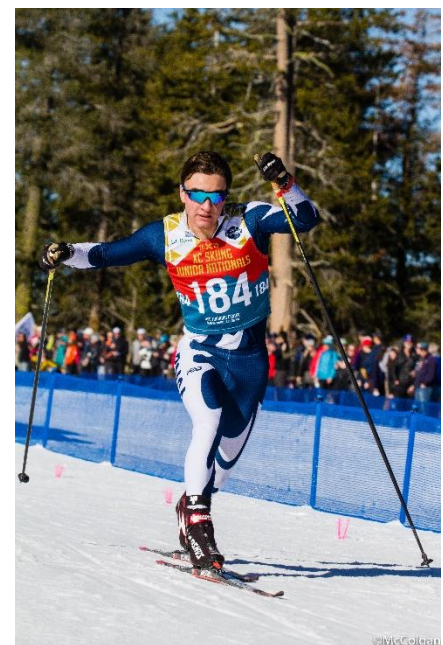
**Methow Valley Nordic Team** MVNT continued at steady level from past winters, with about 100 skiers signed-up as it has for several years. Program efforts continued to focus on reducing barriers for involvement with the program (see new initiatives above) and improving the way in which the program serves the needs of the range of skiers it engages. Efforts to restructure the program at the elementary level and older levels were intended to address previous feedback on weaknesses in these areas. Season-end surveys showed overall positive experiences for skiers, with significant improvement in feedback from parents of younger skiers. Future efforts will continue to work on developing our offerings for all levels of skiers at the middle and high-school level.



Participation in events was good with good showings from MVNT skiers at Hanz' Big Adventure, the Rodeo, The Race of the Methow and Ski to the Sun locally, with skiers traveling to PNSA races, the BC Midget Champs, Intermountain

Youth Champs, the BC Champs, as well as a few Washington Nordic Cup races.

There were also a variety of competitive successes at these events. Among the highlights: Novie McCabe qualifying for her second World Junior Championships and finishing 9<sup>th</sup> in the Mass Start and 2<sup>nd</sup> in the relay; Walker Hall and Gretta Scholz winning national titles in the sprint at the COVID-shortened Junior National Championships; Walker, Gretta and Travis Grialou recording additional top-10 finishes at JNs; 3 additional top-20 finishes at JNs; 13 Junior National Qualifiers; 5<sup>th</sup> ranked junior club overall.



**Methow Valley Biathlon** Had 23 junior biathletes involved in the program this year, practicing typically 2 Saturdays a month beginning in November. The Try Biathlon events continued with strong involvement with a capacity crowd of more than 220 participating in the two day-long events.



The Sun of a Gun race grew in its second year, with 45 participants. Telemark biathlon team from Kelowna, BC who joined us from north of the border, adding to a good contingent of local and Washington state biathletes. Many thanks to Kelly Bolinger for stepping up as a first-time organizer.



On the competitive front, Eva Weymuller and program alum Eli Nielsen both represented the US at the World Youth and Junior biathlon championships. Alex Tareski was selected to represent the US on a trip to Norway at the end of the season, which unfortunately was cancelled due to the coronavirus. Early in the season program alum Kelsey Dickinson reached the podium in an IBU cup race in Sweden; Kelsey's racing performance this year garnered her a nomination to the US Biathlon B Team for the coming ('20-21) season.

A good contingent from the team raced in December at Sovereign Lake, BC, and another group of families was planning to attend end of the season races in Montana which were called off.

**Ski Cubs** saw a surge of interest this year, both from increased interest from 1<sup>st</sup> and 2<sup>nd</sup> graders on Tuesdays, and from the addition of the Kindergarten program (above). In all 44 skiers were involved with once-a-week skiing.

One of our goals this year was to fully fund this program, so any child who desired could participate. We came up short of our goal, but we were able to reduce tuition from \$75 to \$50 per student. This will be a continued focus going forward.

Between the younger Ski Team groups and Ski Cubs, we had over 50 younger elementary kids on skis at least once a week this winter. Keeping these kids involved and active through skiing will be a goal in the future.







Ski Cubs is held in conjunction with the Methow Valley Elementary School's after school Cubs program, and the kids' equipment is provided by Sun Mountain Ski, Methow Valley Ski School and Winthrop Mountain Sports. Thank you to our partners!

Unfortunately, our Ski Cubs director, Keri Moore, will be stepping down from her role this coming year due to increased demands in her professional life. Her enthusiasm, detailed organization, and ability to connect with kids will be missed! We are grateful that she is willing to continue to play a supporting role through this

transition, and a search for her successor will commence this summer.

**Weekly Classes** Weekly class enrollment saw an overall increase of 24% (26 skiers) this season as compared to last, with increases in all programs. Many thanks to Kevin van Bueren who has coordinated coaches and helped organize skiers for our beginner, intermediate and advanced groups these past few years!



	2019-20	2018-19	Change	% Change
<b>Total Weekly Class Enrollment</b>	<b>136</b>	<b>110</b>	26	24%
Beg/Adv Beginner	25	22	3	14%
Intermediate	56	45	11	24%
Advanced	6	5	1	20%
FART	21	17	4	24%
FATT	28	21	7	33%

## Events

**Methow Valley Nordic Camp** A night-before snowfall allowed for good skiing from the Chickadee trailhead, and allowed camp organizers to scrap their back-up plans. Participation was strong again, with the camp filling up within two weeks of registration opening. In all, 139 skiers attended the camp in spite of adverse travel conditions, and feedback was very positive from campers and the community. Many thanks to camp organizers Tracy Ross and Leslie Mittendorf!

**Rodeo** With a heroic shoveling effort from the Methow Valley Nordic Team, a 2.5 km loop was pulled together for this traditional season kick-off race. Participant numbers dropped a bit from last year – down to 130 from 158, presumably due to low snow. Communications in advance focused on an honest appraisal of conditions, and racer reports were good. We have seen a shift over the years from broader adult participation to almost exclusively youth participants. Many thanks to Nordic Ultratune for sponsoring this race again!

**Vintage Ski Tour** Chad and Alieta Gregg organized another very fun New Year's Eve event. If you haven't seen the pictures, it's like a time machine...

**Members' Clinic** The Members' clinic was shifted a weekend later in January, this correlated with an increased enrollment to a near-capacity crowd of 41 at the Mazama Community Club (the event's home base). Feedback again was generally positive, with some constructive comments for future improvements.



**Hanz' Big Adventure** The January 25 predicted-time, choose-your-course, obstacle-incorporating event saw strong participation again with 66 entrants. This year the event added a biathlon element. Reports were the event was a success, teaching kids to own the process of racing – leaving all elements (distance, pace) in their control.

**Race of the Methow** Our Pacific Northwest Ski Association (PNSA) Junior National Qualifier weekend hosted skiers from across the northwest and a number of skiers from BC as well. Total registration was 164 skiers on Saturday and 162 on Sunday – 16 and 12 more, respectively, than 2019. Conditions were challenging with rain Saturday morning and a good freeze on Saturday night. Big Thanks to groomer Casey Smith and Methow Trails for lending us a Pisten Bully to buff the course out to as good as it could be with those conditions.

**Ski to the Sun** For the second year MVNSEF and Methow Trails combined efforts to host the Ski to the Sun Marathon and Relay. This year's event grew from 374 participants to 406 participants. While the relay field decreased from 207 to 197, the marathon grew from 167 to 209 racers. Fun 'add-on' events included a presentation by Olympic Gold Medalist Kikkan Randall at the dinner, and a day-after ski and chat with Kikkan in Mazama.



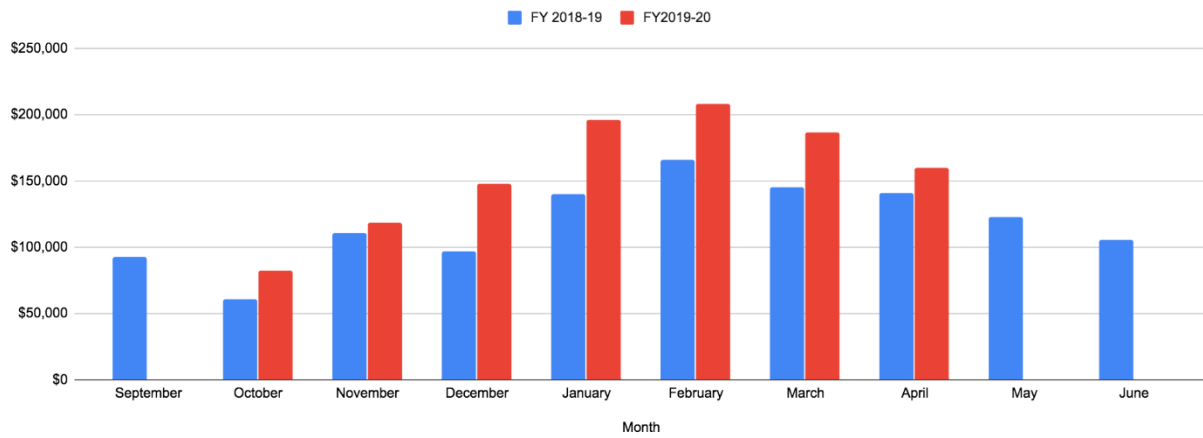
**Tour of the Methow** Another partnership with Methow Trails, the Tour of the Methow saw steady participation with just over 100 signed-up.

## Financial Report

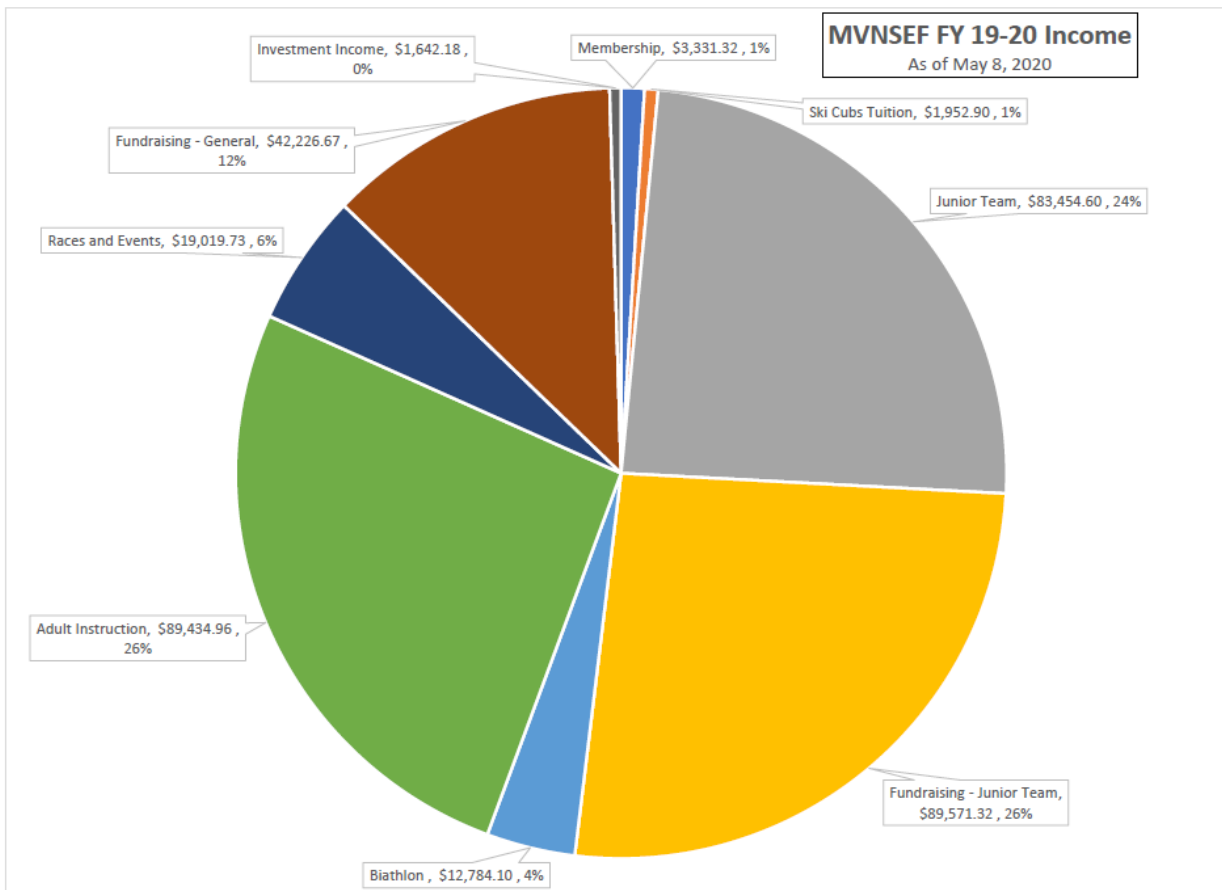
As we approach the end of the fiscal year at the end of June, MVNSEF continues to be on strong financial footing.

The image below shows the monthly balance during much of the past two years in our primary bank account.

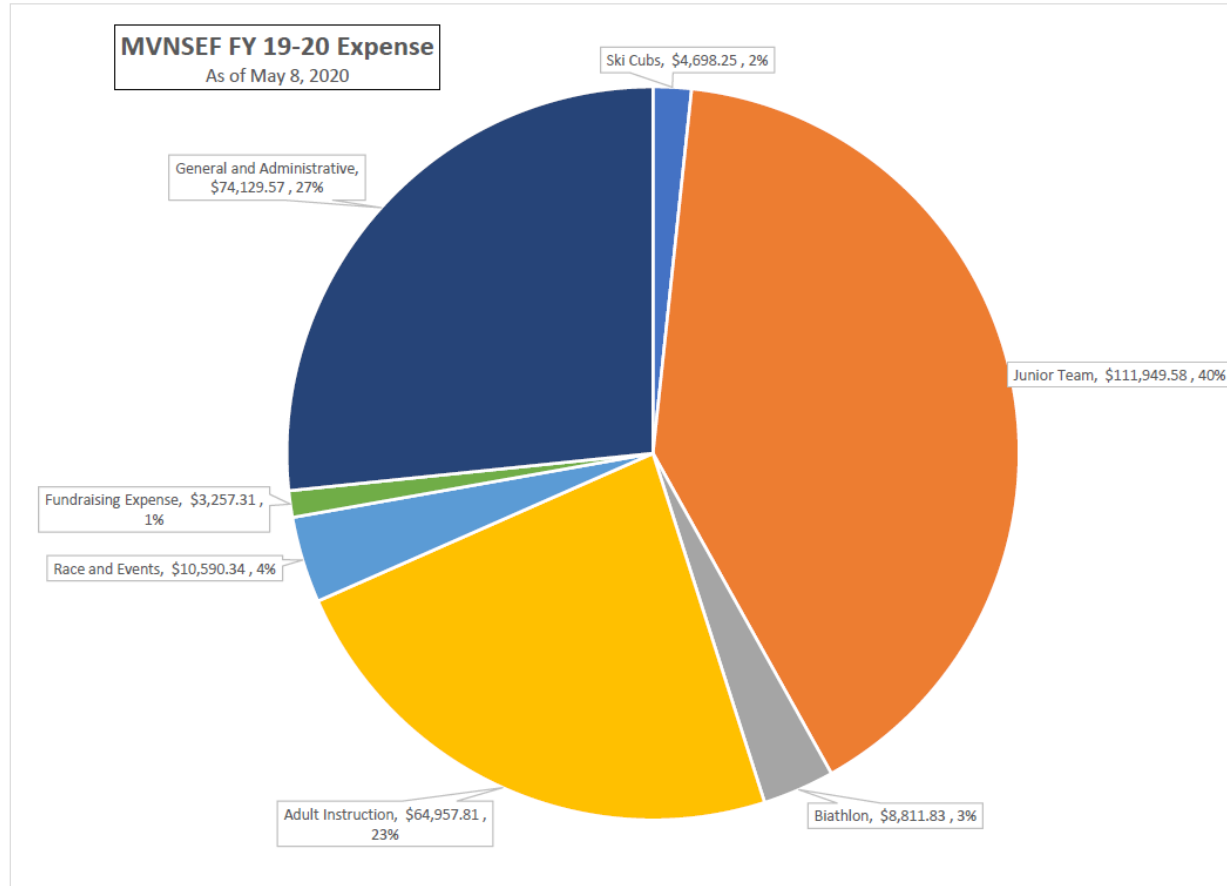
FY 2018-19 and FY2019-20



The graph below shows the distribution of income as of May 8, 2020



This final graph shows the distribution of expenses as of May 8, 2020



## Thank Yous and Acknowledgements

We have many, many organizations, businesses, donors, coaches, employees and volunteers who make everything we do possible. It is an exceptional community around this organization and around Nordic skiing in the Methow Valley that make our nearly 6000 skier-days possible this winter.

We'd like to thank:

**Methow Trails** for everything they do to support our organization, from maintaining an exceptional trail network, to supporting trails at the schools, to lending their equipment to our events, to partnering on other events, to allowing kids under 18 to ski free!

**Winthrop Mountain Sports** has been a supporter of the Ski Team since its inception in the 90s, and they continue to support the team with racing wax and Ski Team families with a ski rental program that includes top-quality equipment unlike any other program in the country.

**Nordic Ultratune** has supported the Ski Rodeo for years and this year supported numerous initiatives this year including donating ski equipment for the Ski Library and ski bags for families to take their skis on the bus.



**Winthrop Physical Therapy and Fitness** supports Power Camp and provides support through injury prevention and rehab services for Methow Valley Nordic Team skiers.

**Methow Valley School District** has been an important partner in developing ski trails, ski programs and events based out of the trail system at the school.

Methow Valley Nordic Ski Educational Foundation (MVNSEF) is operated under a special use permit with the **Okanogan-Wenatchee National Forest**. MVNSEF is an equal-opportunity provider.

There are many, many other organizations, businesses, donors, coaches, employees and volunteers who made nearly 6000 skier-days possible this winter. They include:

Methownet	Adam Kaufman	Chris Moore
Sun Mountain Ski	Aero Methow	Colin and Alisa Sands
Methow Valley Ski School and Rentals	Altius Physical Therapy	Curt and Evelyn Garmager
The Mazama Store	Al and Koko Blakeslee	Cynthia Lochhead
Cascades Outdoor Store	Alan Watson and Karen Nichols	Cynthia Mundhenk
Riverside Printing	Alex and Leslie Hall	Danica Ready
Hank's Harvest Food	Alison Naney	Daphne Ashling Purpus
Bluebird Grains	Andrew Nelson and Danielle Michelleti	Dave Ford
Cinnamon Twisp Bakery	Andy Kindig and Jim Kelley	David and Judith Wright
Eqpd	Anne and Bob Naney	David Longmuir
Kind Grinds	Anne Coghlan	Dean and Sheila Coe
Les Schwab	Anne Johnson	Dean Kurath
Methow Cycle Sport	Anne Theisen & Adam Orkand	Deva & Teresa Harris
Methow Green Clean	Annette Wiederkehr	Don Portman
Michael's Espresso	Annie Budiselich	Doug Anderson
Misty Fjords	Ardis Bynum	EA and Rachelle Weymuller
Nectar Skin Bar	Bart Northcott	Elizabeth Aguirre
Rainshadow Running	Beth Didominico	Emily Post
Moose's Tooth	Betsy Smith	Emma Wells
Rover's Ranch	Bob and Tammy Nielsen	Erik and Julie Lund
Spring Creek Ranch	Brad Laesch and Lexi Weil	Fawn Coussens
Mazama Ranch House	Brandon Bertelsen	Geoff Richardson
Steven Harrop DDS	Brent and Boo Turner	Gerald Smith
Sun Mountain Lodge	Brian Moratti	Gil and Berit Lund
Swix	Bronwen Lodato	Ginny Price and Ted Young
Fischer	Caroline & Marc Tareski	Glenn and Wendy Gellert
Barnyard Cinema	Carolyn Cilek	Grace Butler
Goat's Beard	Casey Canby	Gregory Maniatis & Nina Teicholz
Mazama Country Inn	Casey Smith	Hanz Scholz
Tom Bihn	Chad and Alieta Gregg	Jill and Harold Sheley
US Ski and Snowboard	Chris Clark and Katharine Bill	Heide Andersen
Winthrop Ace Hardware		Hilary and Dan Kaltenbach
Winthrop Veterinary Clinic		J. Bart Bradshaw

Jan Erikson  
Jane and Jamo Parrish  
Jane Strader  
Jay Lucas  
Jean Buennagel  
Jerry Bell  
Jim and Jan Gregg  
Jim Hattori and Lisa Peters  
Jim Kelly and Andy Kindig  
Joanne Schmitz  
Joe Brown  
Joe Reichert  
John & Jeanette O'Keefe  
John Kirner  
John Skemp  
Johnnie Duguay  
Jon Albright and Ashley  
Lodato  
Jud and Connie Marquardt  
Julie Grialou and Susan  
Prichard  
Karen Schuchardt  
Kari Anderson  
Kathleen and Michael Tuggy  
Kathy Ermie-Eldersveld  
Keith and Carol James  
Kelly & John Rohrer  
Kelly Bollinger and Eric  
Purpus  
Ken Rice and Jacquie Luke  
Kent Murdoch

Keri Moore  
Kevin van Bueren  
Kris Jensen  
Kurt and Susan Snover  
Laura McCabe  
Laverne Woods  
Libby Hillis  
Linda and Tom Kimbrell  
Louis Sukovaty  
Lucca Criminale  
Mac Dunstan and Linda Grob  
Marc Leduc  
Margo Aspholm  
Maria Converse  
Marie Delaney  
Marielle Leduc  
Mark Roman  
Mary Ann Ahmed  
Mary Drobka and Tom  
Lenchek  
Michelle Smallman  
Midge Cross  
Nathalie Kuehler  
Paul and Emily Sisson  
Paul Butler and Bo Thrasher  
Paul Gissing  
Paula Lehr  
Pete and Janice Dickinson  
Pete Delong  
Peter and Shannon Polson  
Phil Woras

PJ Hill and Mimi Hogan  
Polly Fabian  
Rachel Mozzetta  
Rich Milsteadt  
Robert and Deb Thorlakson  
Robert Hardwick and Linda  
Schoemaker  
Roman Weil  
Sam and Brooke Lucy  
Sasha Swerdloff & Anders  
Meyer  
Scott Perryman  
Scott Waichler  
Steve and Kim Bondi  
Steve Hirsch and Rebecca  
Shoup  
Steve Mitchell  
Stephanie Fitkin  
Susan Peterson  
Svea Miller  
Terry Buchanon  
Tim Smith and Kathy Kirner  
Tom Dolan  
Tracy Ross & Leslie  
Mittendorf  
Tulie Budiselich  
Valerie & Chris Legler  
Wendy Sims  
Anonymous Donors

We apologize for any omissions; it is truly a community commitment to make our programs thrive and we greatly appreciate each and every person who makes Nordic Skiing in the Methow Valley what it is!